



Power Supply Unit - 115VAC/48VDC, 5A Optimised for CEL Aircraft Warning lights

CEL-PS-115-48-05

Key features

- Extremely reliable - long lifetime
- Optimised for CEL LED-obstacle lights
- 115VAC, 50-60Hz input voltage / 48VDC output voltage
- Degree of protection IP67
- Die cast aluminium enclosure
- Easy to install
- No RF-radiations

Electrical characteristics

- 115VAC 50-60Hz input voltage
- Power consumption max 90VA
- Output voltage 48VDC
- Maximum output current 5A

Mechanical characteristics

- Yellow powder painted die cast aluminium body
- Degree of protection to IP67
- Operating temperature range -55°C... +55°C
- Height 348mm, width 205mm, depth 115mm
- Weight 4kg



CEL-PS-115-48-05 Power Supply Unit

Order Code: **CEL PS-115-48-05**

CEL-PS-115-48-05-PCFL (with Photocell & Flash Controller)

Warranty: 5 year

Made in EU

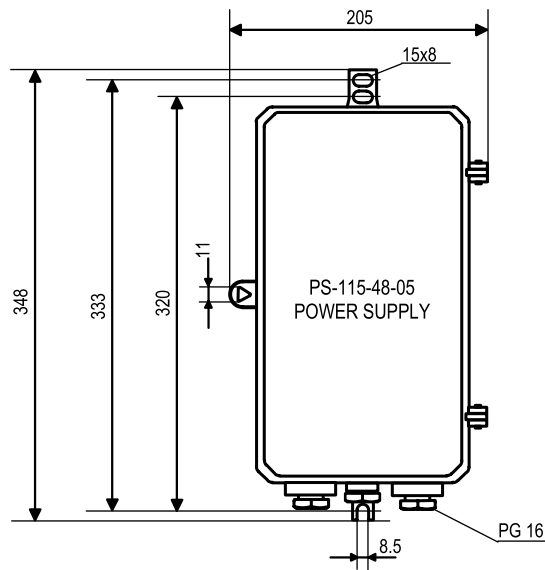
T: +44 (0)20 8540 1034
F: +44 (0)20 8543 3058
E: info@contarnex.com

Contarnex Europe Limited
252 Martin Way,
Morden, Surrey SM4 4AW
United Kingdom

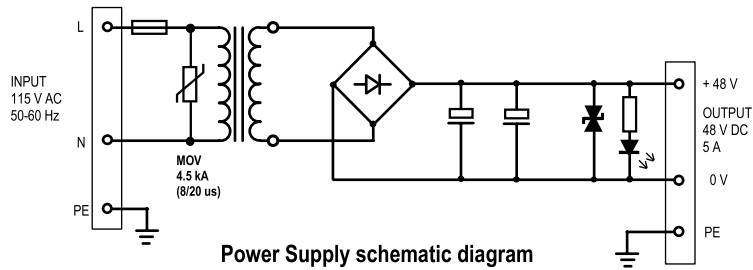


Power Supply Unit - 115VAC/48VDC, 5A Optimised for CEL Aircraft Warning lights

CEL-PS-115-48-05



Mechanical dimensions



Power Supply schematic diagram